

Ray Robot II™

Users Manual

and

Live Test Results

for

MetaTrader 4

Distributed by [Trading-Gurus.com](http://trading-gurus.com)

reVision 1.02

April 29th 2012

©2011-12 Marketing Dreams Ltd. All Rights Reserved

Lyalls Cottage, Dunchideock, Exeter EX6 7YD, United Kingdom

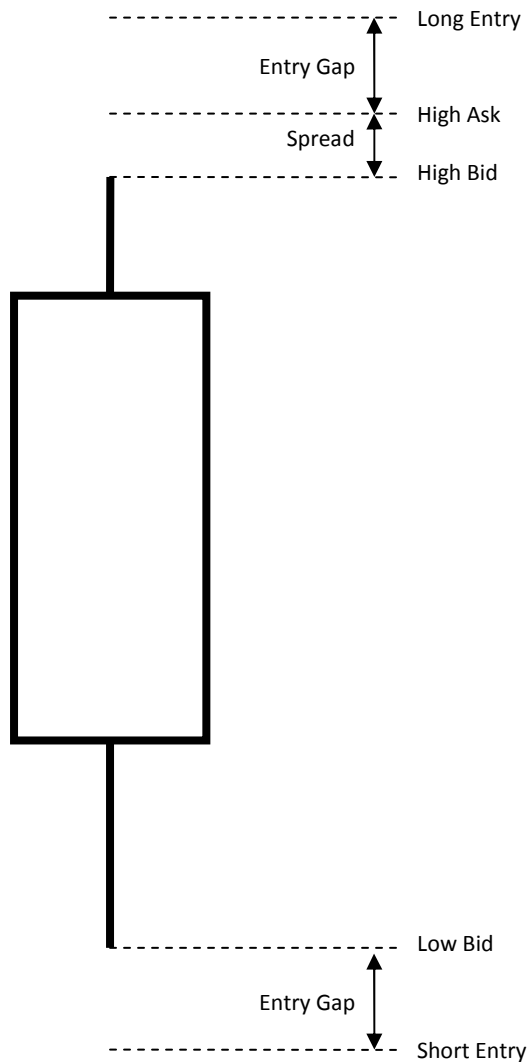
Contact us by using the form at: <http://trading-gurus.com/contact-us/>

Table of Contents

Theory of Operation	3
Input Settings.....	4
MMType	4
Lots	4
RiskPercent	4
FadeEntry.....	4
EntryGap.....	4
ProfitTarget	4
StopLoss.....	4
UseLog	4
Backtesting and Optimization Setup	7
Live Test Results.....	8
Backtest Results	12
Delayed Quotes	20
GKFX Live Account	20
Alpari UK Live Account.....	23
Three Month Backtest Results.....	27

Theory of Operation

Ray Robot II is the son of Ray the Random Robot. He has learnt from his father's mistakes, and he's therefore slightly less stupid than Ray Senior. He still doesn't use any indicators, but he doesn't use pseudo-random entries either. RR2 waits for a bar (or candlestick if you prefer) to complete. Then he works out the highest ask price and the lowest bid price of the bar that has just been completed. Then he places two pending stop entry orders. The first is EntryGap pips above the high he just worked out. The second is EntryGap pips below the low he just worked out. Bars in MetaTrader 4 are based on the bid price only, so Ray needs to add on the spread when calculating his long entry price. This diagram shows the sums Ray does in his elementary electronic brain:



Both pending orders use identical fixed stop loss and take profit levels, controlled by the StopLoss and ProfitTarget [input settings](#). Having set up those two pending orders Ray just sits around and waits. If one pending order is filled, he cancels the other one, then waits a while longer. If a new bar starts and Ray is in a trade he waits for the next bar. If his previous trade has closed because one of the two possible exits has been hit he starts all over again, and places two new pending orders.

Just to complicate matters, there is the additional FadeEntry input setting. If that is changed to TRUE then instead of placing stop entry orders Ray places limit entry orders. For example, if the price fell to the level labeled "Short Entry" above, Ray would place a "Long Entry" order instead, and then blindly hope that the price would retrace back towards the body of the candle, instead of breaking out. Note that EntryGap can be set to a negative number!

Input Settings

```
//+-----+
//|                                     RayRobot2.mq4 |
//| Copyright © 2011-12, Marketing Dreams Ltd. All Rights Reserved. |
//| http://community.trading-gurus.com/threads/150 |
//|                                     |
//| GuruTrader™ example 7 |
//| Version 1.02 |
//| |
//| Also known as the Son of Ray the Random Robot™, or Ray Robot II™ |
//| for short, or even just RR2™ as a convenient TLA. |
//| |
//| Enters using a pair of stop orders that "bracket" the most |
//| recent bar, and hence enters on a breakout. Also includes a |
//| "fade" option to use a pair of limit orders instead. |
//| |
//| Wealth Warning! This expert is for educational purposes only. |
//| It should NEVER be used on a live account. Past performance is |
//| in no way indicative of future results! |
//+-----+
//+ Revision History |
//+ |
//+ 1.02 - April 29th 2012 |
//+   Added Started to allow initial test setup in start() |
//+   Check for open position on startup |
//+   Added order expiry input settings |
//+   Added display of startup spread |
//+   Removed superfluous Print()s |
//+ |
//+ 1.01 - November 19th 2011 |
//+   Included Sunday bar in Monday on D1 timeframe |
//+   Added TradeAllowed() |
//+ |
//+ 1.00 - November 11th 2011 |
//+   First offspring of Ray the Random Robot™ to dispense with |
//+   "random" entries. |
//+-----+
```

//---- Input settings

MMType (default 0)	// Money management method - 0 = None (Fixed order size)
	// 1 = Fixed Fractional, 2 = Fixed % at risk
Lots (default 0.1)	// Size of each order (if not using money management)
RiskPercent (default 1.0)	// Money management master control (use with caution!!!)
FadeEntry (default FALSE)	// Set TRUE to use "mean reversion" instead of "breakout" mode
EntryGap (default 1)	// Gap between bar and entry price in pips(can be negative!!)
ProfitTarget (default 50)	// Fixed take profit target in pips
StopLoss (default 10)	// Fixed stop loss in pips
DailyExpiry (default FALSE)	// Expire every day (for stocks and indices). Otherwise only expire on a Friday.
ExpiryHours (default 22)	// Expiry time for pending orders
ExpiryMins (default 59)	// Set ExpiryHours >= 24 to disable
UseLog (default TRUE)	// Set to TRUE for extra debug messages

This document currently also contains details of the first week's results of the Trading Gurus' live spread betting test, comparing the performance of Ray Robot II™ on live and demo accounts at both [GKFX](#) and [Alpari UK](#).

To make sure you have the latest MQL4 source code for Ray Robot 2™ please check:

<http://community.trading-gurus.com/threads/150>

For in occasional in depth reports on this live test (and others too) please go to:

<http://trading-gurus.com/tag/live-test>

To see up to date live results of Ray's spread betting test please keep an eye on:

<http://www.myfxbook.com/members/TradingGurus>

If you're interested in keeping tabs on mysterious MetaTrader delayed quotes, as well as regular trading updates from Ray, then please visit: <http://community.trading-gurus.com/threads/153>

Should you wish to conduct your own experiments along the same lines as Ray, some screenshots are enclosed, showing exactly how Ray has MetaTrader 4 set up for conducting his tests. He is currently utilizing daily bars on GBP/USD.

Ray the second's own first week of live trading was comparatively uneventful. Included below are four Adobe Acrobat PDF files downloaded from myfxbook detailing how his "forward tests" have proceeded so far. Note that whilst there have been some significant differences between the two brokers under test, the bottom line on all four accounts is the same. Five trades. Five 10 pip losses. The equity of all four accounts has reduced from an initial £250.00 to £245.00 after one week of live trading.

Also enclosed are four sets of backtest results, originally produced by the MetaTrader 4 strategy tester but now combined into this single PDF file. Spot any differences?

Possibly most interesting of all have been the results we've obtained by [logging delays](#) in the quotes Ray has been receiving from both Alpari and GKFX. The next NFP numbers aren't due out for a couple of weeks yet, but even in the absence of major news events the worst delay so far has been 82 seconds from Alpari and 40 seconds from GKFX!

Given all this information, how much faith do you suppose we should place in the three month backtest results also enclosed, which use data acquired from a Smart Live Markets live account that has been running for over a year in total? Those results show a modest profit on Ray's default settings of 50/10/1. Do you suppose our four live test accounts will also be showing a modest profit three months from now?

Cheers,

Jim, Ray Robot II and Ray the Random Robot

Backtesting and Optimization Setup

Expert Advisor: RayRobot2, Copyright © 2011, Marketing Dreams Ltd. Expert properties

Symbol: GBPU\$DSB, Great Britain Pound vs US Dollar (Bet per 0.0001) Symbol properties

Model: Every tick (the most precise method based on all available least timeframes to generate each tick) Open chart

Use date ☒ From: 2011.11.13 To: 2011.11.19 Optimization ☐ Modify expert

Visual mode ☐ Skip to 2011.11.19 Start

Settings Journal

RayRobot2 ? X

Testing Inputs Optimization

Initial deposit: 250 GBP

Positions: Long & Short

Optimization

Optimized parameter: Balance

Genetic algorithm ☐

OK Cancel Reset

RayRobot2 ? X

Testing Inputs Optimization

Variable	Value	Start	Step	Stop
<input type="checkbox"/> MMType	0	0	0	0
<input type="checkbox"/> Lots	0.1	0.1	0	0
<input type="checkbox"/> RiskPercent	1	1	0	0
<input type="checkbox"/> FadeEntry	false			
<input type="checkbox"/> EntryGap	1	1	1	10
<input checked="" type="checkbox"/> ProfitTarget	50	10	10	200
<input checked="" type="checkbox"/> StopLoss	10	5	5	100

Load Save

OK Cancel Reset

Live Test Results

Account Statement

Created by Myfxbook.com

Ray Robot II™ - Alpari UK Live Spread Bet Account

Account Number: Private (Real), GBP

Broker: Alpari UK

Page 1 of 1

Period: 11/11/2011 00:00 - 11/18/2011 08:59

Closed Trades:

Open Date	Close date	Symbol	Action	Lots	SL	TP	Open Price	Close Price	Pips	Profit (GBP)
11/11/2011 10:14			Deposit							250.00
11/14/2011 10:17	11/14/2011 16:48	GBPUSD	Buy Stop	0.10	1.60854	1.61454	1.60954	1.58954	0.0	0.00
11/14/2011 16:48	11/14/2011 16:54	GBPUSD	Sell	0.10	1.59031	1.58431	1.58931	1.59031	-10.0	-1.00
11/14/2011 18:42	11/14/2011 18:43	GBPUSD	Buy Stop	0.10	1.60854	1.61454	1.60954	1.58956	0.0	0.00
11/15/2011 00:00	11/15/2011 05:36	GBPUSD	Buy Stop	0.10	1.60852	1.61452	1.60952	1.58807	0.0	0.00
11/15/2011 05:36	11/15/2011 06:05	GBPUSD	Sell	0.10	1.58888	1.58288	1.58788	1.58888	-10.0	-1.00
11/14/2011 23:22	11/15/2011 11:41	GBPUSD	Buy Stop	1.00	0.00000	0.00000	1.70000	1.58449	0.0	0.00
11/15/2011 20:39	11/15/2011 20:39	GBPUSD	Buy Stop	0.10	1.60852	1.61452	1.60952	1.58279	0.0	0.00
11/16/2011 00:00	11/16/2011 00:57	GBPUSD	Buy Stop	0.10	1.59245	1.59845	1.59345	1.58002	0.0	0.00
11/16/2011 00:57	11/16/2011 01:00	GBPUSD	Sell	0.10	1.59077	1.57477	1.57977	1.58077	-10.0	-1.00
11/17/2011 00:00	11/17/2011 00:14	GBPUSD	Buy Stop	0.10	1.58148	1.58748	1.58248	1.57201	0.0	0.00
11/17/2011 00:14	11/17/2011 03:36	GBPUSD	Sell	0.10	1.57277	1.56677	1.57177	1.57277	-10.0	-1.00
11/18/2011 00:00	11/18/2011 08:38	GBPUSD	Sell Stop	0.10	1.56994	1.56394	1.56894	1.58131	0.0	0.00
11/18/2011 08:38	11/18/2011 08:59	GBPUSD	Buy	0.10	1.58048	1.58648	1.58148	1.58048	-10.0	-1.00

Open Trades:

No Open Trades.

Open Orders:

No Open Orders.

Account Summary:

Deposits:	250.00	Total Trades:	5	Trading Started:	11/11/2011
Withdrawals:	0.00	Trades Won:	0 (0%)	Balance:	245.00
Profit:	-5.00	Trades Lost:	5 (100%)	Equity:	245.00
Swap:	0.00	Total Pips:	-50.0	Leverage:	1:500

Foreign exchange trading is very speculative and involves a significant risk of loss.
Any data and information is provided 'as is' solely for informational purposes, and is not intended for trading purposes or advice.

Ray Robot II™ Users Manual

Account Statement

Created by Myfxbook.com

Ray Robot II™ - Alpari UK Demo Spread Bet Account

Account Number: Private (Demo), GBP

Broker: Alpari UK

Page 1 of 1

Period: 11/11/2011 00:00 - 11/18/2011 08:59

Closed Trades:

Open Date	Close date	Symbol	Action	Lots	SL	TP	Open Price	Close Price	Pips	Profit (GBP)
11/11/2011 23:46			Deposit							250.00
11/14/2011 09:42	11/14/2011 16:48	GBPUSD	Buy Stop	0.10	1.60854	1.61454	1.60954	1.58954	0.0	0.00
11/14/2011 16:48	11/14/2011 16:54	GBPUSD	Sell	0.10	1.59031	1.58431	1.58931	1.59031	-10.0	-1.00
11/14/2011 18:52	11/14/2011 18:53	GBPUSD	Sell Stop	0.10	1.59031	1.58431	1.58931	1.58982	0.0	0.00
11/14/2011 18:52	11/14/2011 18:53	GBPUSD	Buy Stop	0.10	1.60854	1.61454	1.60954	1.59005	0.0	0.00
11/15/2011 00:00	11/15/2011 05:36	GBPUSD	Buy Stop	0.10	1.60852	1.61452	1.60952	1.58807	0.0	0.00
11/15/2011 05:36	11/15/2011 06:05	GBPUSD	Sell	0.10	1.58888	1.58288	1.58788	1.58888	-10.0	-1.00
11/15/2011 17:08	11/15/2011 17:25	GBPUSD	Buy Stop	0.10	0.00000	0.00000	1.70000	1.58175	0.0	0.00
11/15/2011 20:40	11/15/2011 20:41	GBPUSD	Buy Stop	0.10	1.60852	1.61452	1.60952	1.58285	0.0	0.00
11/16/2011 00:00	11/16/2011 00:57	GBPUSD	Buy Stop	0.10	1.59245	1.59845	1.59345	1.58002	0.0	0.00
11/16/2011 00:57	11/16/2011 01:00	GBPUSD	Sell	0.10	1.58077	1.57477	1.57977	1.58077	-10.0	-1.00
11/17/2011 00:00	11/17/2011 00:14	GBPUSD	Buy Stop	0.10	1.58148	1.58748	1.58248	1.57199	0.0	0.00
11/17/2011 00:14	11/17/2011 03:36	GBPUSD	Sell	0.10	1.57277	1.56677	1.57177	1.57277	-10.0	-1.00
11/18/2011 00:00	11/18/2011 08:38	GBPUSD	Sell Stop	0.10	1.56994	1.56394	1.56894	1.58126	0.0	0.00
11/18/2011 08:38	11/18/2011 08:59	GBPUSD	Buy	0.10	1.58048	1.58648	1.58148	1.58048	-10.0	-1.00

Open Trades:

No Open Trades.

Open Orders:

No Open Orders.

Account Summary:

Deposits:	250.00	Total Trades:	5	Trading Started:	11/11/2011
Withdrawals:	0.00	Trades Won:	0 (0%)	Balance:	245.00
Profit:	-5.00	Trades Lost:	5 (100%)	Equity:	245.00
Swap:	0.00	Total Pips:	-50.0	Leverage:	1:500

Foreign exchange trading is very speculative and involves a significant risk of loss.
 Any data and information is provided 'as is' solely for informational purposes, and is not intended for trading purposes or advice.

Account Statement

Created by Myfxbook.com

Ray Robot II™ - GKFX Live Spread Bet Account

Account Number: Private (Real), GBP

Broker: GKFX

Page 1 of 1

Period: 11/11/2011 00:00 - 11/18/2011 08:59

Closed Trades:

Open Date	Close date	Symbol	Action	Lots	SL	TP	Open Price	Close Price	Pips	Profit (GBP)
11/11/2011 14:16			Deposit							250.00
11/14/2011 16:47	11/14/2011 16:54	GBPUSD	Sell	0.10	1.59040	1.58440	1.58940	1.59040	-10.0	-1.00
11/14/2011 10:17	11/14/2011 17:39	GBPUSD	Buy Stop	0.10	1.60852	1.61452	1.60952	1.59017	0.0	0.00
11/14/2011 17:40	11/14/2011 17:40	GBPUSD	Buy Stop	0.10	1.60852	1.61452	1.60952	1.59010	0.0	0.00
11/14/2011 17:40	11/14/2011 17:40	GBPUSD	Sell Stop	0.10	1.59040	1.58440	1.58940	1.58990	0.0	0.00
11/14/2011 19:31	11/14/2011 23:15	GBPUSD	Buy Stop	1.00	0.00000	0.00000	1.70000	1.59112	0.0	0.00
11/15/2011 00:00	11/15/2011 05:36	GBPUSD	Buy Stop	0.10	1.60845	1.61445	1.60945	1.58805	0.0	0.00
11/15/2011 05:36	11/15/2011 06:33	GBPUSD	Sell	0.10	1.58890	1.58290	1.58790	1.58890	-10.0	-1.00
11/15/2011 20:34	11/15/2011 20:34	GBPUSD	Buy Stop	0.10	1.60845	1.61445	1.60945	1.58282	0.0	0.00
11/16/2011 00:00	11/16/2011 01:16	GBPUSD	Buy Stop	0.10	1.58240	1.59840	1.59340	1.57986	0.0	0.00
11/16/2011 01:16	11/16/2011 01:26	GBPUSD	Sell	0.10	1.58079	1.57479	1.57979	1.58079	-10.0	-1.00
11/17/2011 00:00	11/17/2011 00:14	GBPUSD	Buy Stop	0.10	1.58141	1.58741	1.58241	1.57196	0.0	0.00
11/17/2011 00:14	11/17/2011 03:36	GBPUSD	Sell	0.10	1.57278	1.56678	1.57178	1.57278	-10.0	-1.00
11/18/2011 00:00	11/18/2011 08:38	GBPUSD	Sell Stop	0.10	1.56997	1.56397	1.56897	1.58129	0.0	0.00
11/18/2011 08:38	11/18/2011 08:59	GBPUSD	Buy	0.10	1.58048	1.58648	1.58148	1.58048	-10.0	-1.00

Open Trades:

No Open Trades.

Open Orders:

No Open Orders.

Account Summary:

Deposits:	250.00	Total Trades:	5	Trading Started:	11/11/2011
Withdrawals:	0.00	Trades Won:	0 (0%)	Balance:	245.00
Profit:	-5.00	Trades Lost:	5 (100%)	Equity:	245.00
Swap:	0.00	Total Pips:	-50.0	Leverage:	1:100

Foreign exchange trading is very speculative and involves a significant risk of loss.
 Any data and information is provided 'as is' solely for informational purposes, and is not intended for trading purposes or advice.

Account Statement

Created by Myfxbook.com

Ray Robot II™ - GKFX Demo Spread Bet Account

Account Number: 110928 (Demo), GBP

Broker: GKFX

Page 1 of 1

Period: 11/11/2011 00:00 - 11/18/2011 08:59

Closed Trades:

Open Date	Close date	Symbol	Action	Lots	SL	TP	Open Price	Close Price	Pips	Profit (GBP)
11/11/2011 23:56			Deposit							10000.00
11/14/2011 09:45	11/14/2011 10:45	GBPUSD	Buy Stop	0.10	1.60852	1.61452	1.60952	1.59417	0.0	0.00
11/14/2011 09:45	11/14/2011 10:45	GBPUSD	Sell Stop	0.10	1.59040	1.58440	1.58940	1.59401	0.0	0.00
11/14/2011 10:55	11/14/2011 10:55	GBPUSD	Buy Stop	0.10	1.60852	1.61452	1.60952	1.59405	0.0	0.00
11/14/2011 10:55	11/14/2011 10:55	GBPUSD	Sell Stop	0.10	1.59040	1.58440	1.58940	1.59401	0.0	0.00
11/14/2011 11:08			Withdrawal							-9750.00
11/14/2011 10:56	11/14/2011 16:47	GBPUSD	Buy Stop	0.10	1.60852	1.61452	1.60952	1.58958	0.0	0.00
11/14/2011 16:47	11/14/2011 16:54	GBPUSD	Sell	0.10	1.59040	1.58440	1.58940	1.59040	-10.0	-1.00
11/14/2011 18:07	11/14/2011 18:07	GBPUSD	Sell Stop	0.10	1.59040	1.58440	1.58940	1.58972	0.0	0.00
11/14/2011 18:07	11/14/2011 18:07	GBPUSD	Buy Stop	0.10	1.60852	1.61452	1.60952	1.58992	0.0	0.00
11/15/2011 00:00	11/15/2011 05:36	GBPUSD	Buy Stop	0.10	1.60845	1.61445	1.60945	1.58905	0.0	0.00
11/15/2011 05:36	11/15/2011 06:33	GBPUSD	Sell	0.10	1.58890	1.58290	1.58790	1.58890	-10.0	-1.00
11/15/2011 17:14	11/15/2011 17:26	GBPUSD	Buy Stop	1.00	0.00000	0.00000	1.70000	1.58183	0.0	0.00
11/15/2011 20:36	11/15/2011 20:36	GBPUSD	Buy Stop	0.10	1.60845	1.61445	1.60945	1.58275	0.0	0.00
11/16/2011 00:00	11/16/2011 01:16	GBPUSD	Buy Stop	0.10	1.59240	1.58640	1.59340	1.57990	0.0	0.00
11/16/2011 01:16	11/16/2011 01:26	GBPUSD	Sell	0.10	1.58079	1.57479	1.57979	1.58079	-10.0	-1.00
11/17/2011 00:00	11/17/2011 00:14	GBPUSD	Buy Stop	0.10	1.58141	1.58741	1.58241	1.57200	0.0	0.00
11/17/2011 00:14	11/17/2011 03:36	GBPUSD	Sell	0.10	1.57278	1.56678	1.57178	1.57278	-10.0	-1.00
11/18/2011 00:00	11/18/2011 08:38	GBPUSD	Sell Stop	0.10	1.56997	1.56397	1.56897	1.58129	0.0	0.00
11/18/2011 08:38	11/18/2011 08:59	GBPUSD	Buy	0.10	1.58048	1.58648	1.58148	1.58048	-10.0	-1.00

Open Trades:

No Open Trades.

Open Orders:

No Open Orders.

Account Summary:

Deposits:	10000.00	Total Trades:	5	Trading Started:	11/11/2011
Withdrawals:	-9750.00	Trades Won:	0 (0%)	Balance:	245.00
Profit:	-5.00	Trades Lost:	5 (100%)	Equity:	245.00
Swap:	0.00	Total Pips:	-50.0	Leverage:	1:100

Foreign exchange trading is very speculative and involves a significant risk of loss.
 Any data and information is provided 'as is' solely for informational purposes, and is not intended for trading purposes or advice.

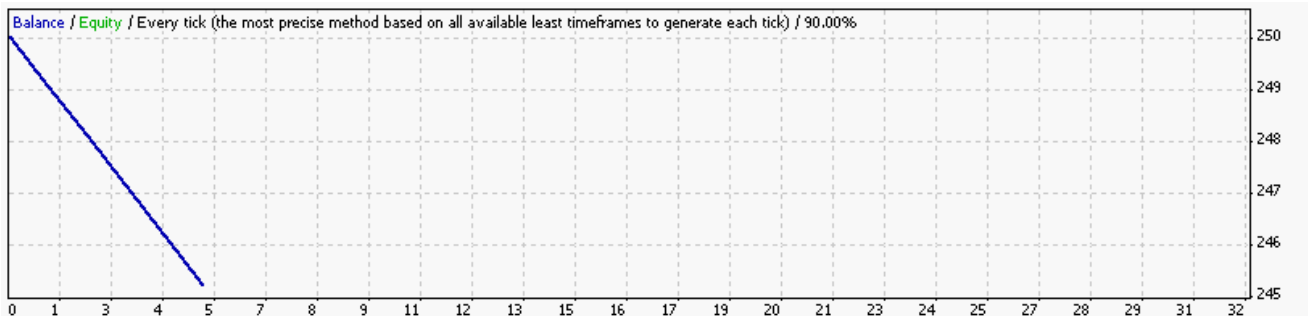
Backtest Results

Strategy Tester Report

RayRobot2

AlpariUK Spread Betting Live (Build 409)

Symbol	GBPUSD (Great Britain Pound vs US Dollar)				
Period	Daily (D1) 2011.11.14 00:00 - 2011.11.18 00:00 (2011.11.13 - 2011.11.19)				
Model	Every tick (the most precise method based on all available least timeframes)				
Parameters	MMType=0; Lots=0.1; RiskPercent=1; FadeEntry=false; EntryGap=1; ProfitTarget=50; StopLoss=10; useLog=true;				
Bars in test	1006	Ticks modelled	480392	Modelling quality	90.00%
Mismatched charts errors	2				
Initial deposit	250.00				
Total net profit	-5.00	Gross profit	0.00	Gross loss	-5.00
Profit factor	0.00	Expected payoff	-1.00		
Absolute drawdown	5.00	Maximal drawdown	5.07 (2.03%)	Relative drawdown	2.03% (5.07)
Total trades	5	Short positions (won %)	4 (0.00%)	Long positions (won %)	1 (0.00%)
		Profit trades (% of total)	0 (0.00%)	Loss trades (% of total)	5 (100.00%)
	Largest	profit trade	0.00	loss trade	-1.00
	Average	profit trade	0.00	loss trade	-1.00
	Maximum	consecutive wins (profit in money)	0 (0.00)	consecutive losses (loss in money)	5 (-5.00)
	Maximal	consecutive profit (count of wins)	0.00 (0)	consecutive loss (count of losses)	-5.00 (5)
	Average	consecutive wins	0	consecutive losses	5



Ray Robot II™ Users Manual

#	Time	Type	Order	Size	Price	S / L	T / P	Profit	Balance
1	2011.11.14 00:00	buy stop	1	0.10	1.60962	1.60862	1.61462		
2	2011.11.14 00:00	sell stop	2	0.10	1.58931	1.59031	1.58431		
3	2011.11.14 16:48	sell	2	0.10	1.58931	1.59031	1.58431		
4	2011.11.14 16:48	delete	1	0.10	1.60962	1.60862	1.61462		
5	2011.11.14 16:53	s/l	2	0.10	1.59031	1.59031	1.58431	-1.00	249.00
6	2011.11.15 00:00	buy stop	3	0.10	1.60960	1.60860	1.61460		
7	2011.11.15 00:00	sell stop	4	0.10	1.58788	1.58888	1.58288		
8	2011.11.15 05:36	sell	4	0.10	1.58788	1.58888	1.58288		
9	2011.11.15 05:36	delete	3	0.10	1.60960	1.60860	1.61460		
10	2011.11.15 06:05	s/l	4	0.10	1.58888	1.58888	1.58288	-1.00	248.00
11	2011.11.16 00:00	buy stop	5	0.10	1.59353	1.59253	1.59853		
12	2011.11.16 00:00	sell stop	6	0.10	1.57977	1.58077	1.57477		
13	2011.11.16 00:57	sell	6	0.10	1.57977	1.58077	1.57477		
14	2011.11.16 00:57	delete	5	0.10	1.59353	1.59253	1.59853		
15	2011.11.16 01:00	s/l	6	0.10	1.58077	1.58077	1.57477	-1.00	247.00
16	2011.11.17 00:00	buy stop	7	0.10	1.58256	1.58156	1.58756		
17	2011.11.17 00:00	sell stop	8	0.10	1.57177	1.57277	1.56677		
18	2011.11.17 00:14	sell	8	0.10	1.57177	1.57277	1.56677		
19	2011.11.17 00:14	delete	7	0.10	1.58256	1.58156	1.58756		
20	2011.11.17 03:36	s/l	8	0.10	1.57277	1.57277	1.56677	-1.00	246.00
21	2011.11.18 00:00	buy stop	9	0.10	1.58154	1.58054	1.58654		
22	2011.11.18 00:00	sell stop	10	0.10	1.56894	1.56994	1.56394		
23	2011.11.18 08:38	buy	9	0.10	1.58154	1.58054	1.58654		
24	2011.11.18 08:38	delete	10	0.10	1.56894	1.56994	1.56394		
25	2011.11.18 08:59	s/l	9	0.10	1.58054	1.58054	1.58654	-1.00	245.00

Strategy Tester Report

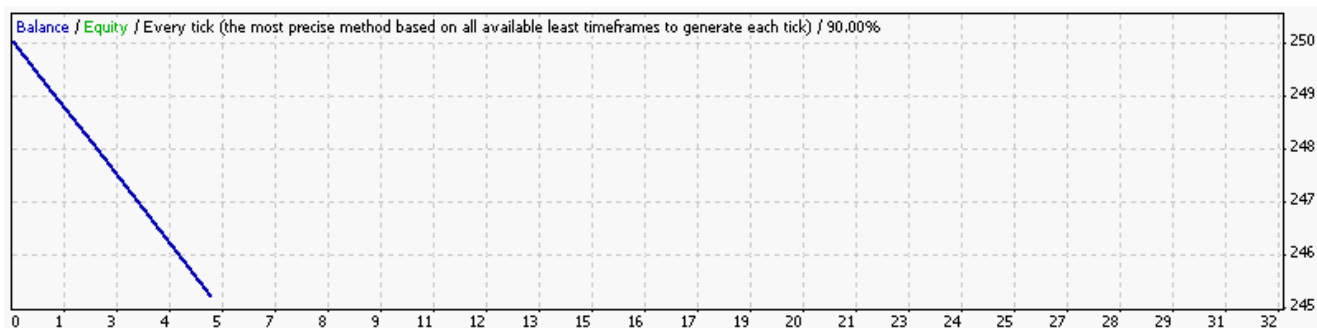
RayRobot2

AlpariUK Spread Betting Demo (Build 409)

Symbol GBPUSD (Great Britain Pound vs US Dollar)
 Period Daily (D1) 2011.11.14 00:00 - 2011.11.18 00:00 (2011.11.13 - 2011.11.19)
 Model Every tick (the most precise method based on all available least timeframes)
 Parameters MMTYPE=0; Lots=0.1; RiskPercent=1; FadeEntry=false; EntryGap=1; ProfitTarget=50; StopLoss=10; useLog=true;

Bars in test 1006 Ticks modelled 480389 Modelling quality 90.00%
 Mismatched charts errors 4

Initial deposit 250.00
 Total net profit -5.00 Gross profit 0.00 Gross loss -5.00
 Profit factor 0.00 Expected payoff -1.00
 Absolute drawdown 5.00 Maximal drawdown 5.07 (2.03%) Relative drawdown 2.03% (5.07)
 Total trades 5 Short positions (won %) 4 (0.00%) Long positions (won %) 1 (0.00%)
 Profit trades (% of total) 0 (0.00%) Loss trades (% of total) 5 (100.00%)
 Largest profit trade 0.00 loss trade -1.00
 Average profit trade 0.00 loss trade -1.00
 Maximum consecutive wins (profit in money) 0 (0.00) consecutive losses (loss in money) 5 (-5.00)
 Maximal consecutive profit (count of wins) 0.00 (0) consecutive loss (count of losses) -5.00 (5)
 Average consecutive wins 0 consecutive losses 5



Ray Robot II™ Users Manual

#	Time	Type	Order	Size	Price	S / L	T / P	Profit	Balance
1	2011.11.14 00:00	buy stop	1	0.10	1.60962	1.60862	1.61462		
2	2011.11.14 00:00	sell stop	2	0.10	1.58931	1.59031	1.58431		
3	2011.11.14 16:48	sell	2	0.10	1.58931	1.59031	1.58431		
4	2011.11.14 16:48	delete	1	0.10	1.60962	1.60862	1.61462		
5	2011.11.14 16:53	s/l	2	0.10	1.59031	1.59031	1.58431	-1.00	249.00
6	2011.11.15 00:00	buy stop	3	0.10	1.60960	1.60860	1.61460		
7	2011.11.15 00:00	sell stop	4	0.10	1.58788	1.58888	1.58288		
8	2011.11.15 05:36	sell	4	0.10	1.58788	1.58888	1.58288		
9	2011.11.15 05:36	delete	3	0.10	1.60960	1.60860	1.61460		
10	2011.11.15 06:05	s/l	4	0.10	1.58888	1.58888	1.58288	-1.00	248.00
11	2011.11.16 00:00	buy stop	5	0.10	1.59353	1.59253	1.59853		
12	2011.11.16 00:00	sell stop	6	0.10	1.57977	1.58077	1.57477		
13	2011.11.16 00:57	sell	6	0.10	1.57977	1.58077	1.57477		
14	2011.11.16 00:57	delete	5	0.10	1.59353	1.59253	1.59853		
15	2011.11.16 01:00	s/l	6	0.10	1.58077	1.58077	1.57477	-1.00	247.00
16	2011.11.17 00:00	buy stop	7	0.10	1.58256	1.58156	1.58756		
17	2011.11.17 00:00	sell stop	8	0.10	1.57177	1.57277	1.56677		
18	2011.11.17 00:14	sell	8	0.10	1.57177	1.57277	1.56677		
19	2011.11.17 00:14	delete	7	0.10	1.58256	1.58156	1.58756		
20	2011.11.17 03:36	s/l	8	0.10	1.57277	1.57277	1.56677	-1.00	246.00
21	2011.11.18 00:00	buy stop	9	0.10	1.58154	1.58054	1.58654		
22	2011.11.18 00:00	sell stop	10	0.10	1.56894	1.56994	1.56394		
23	2011.11.18 08:38	buy	9	0.10	1.58154	1.58054	1.58654		
24	2011.11.18 08:38	delete	10	0.10	1.56894	1.56994	1.56394		
25	2011.11.18 08:59	s/l	9	0.10	1.58054	1.58054	1.58654	-1.00	245.00

Strategy Tester Report

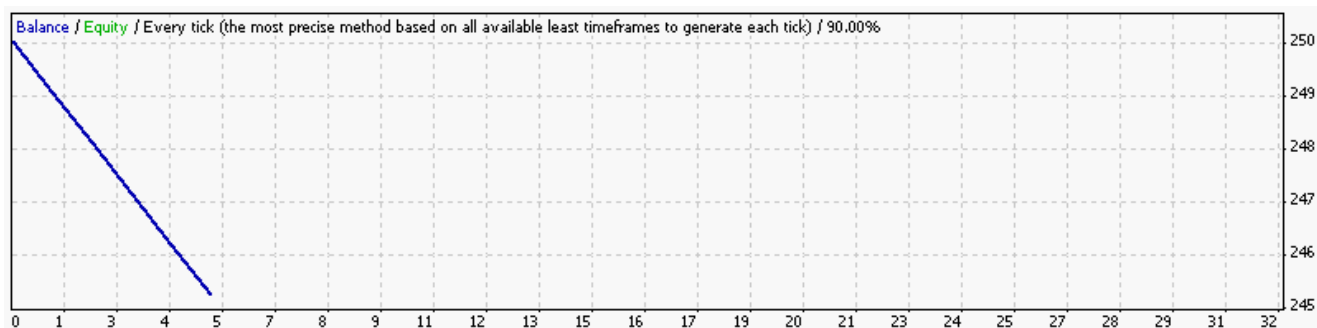
RayRobot2

GKFX Spread Trading Live (Build 409)

Symbol GBPUSSDB (Great Britain Pound vs US Dollar (Bet per 0.0001))
 Period Daily (D1) 2011.11.13 00:00 - 2011.11.18 00:00 (2011.11.13 - 2011.11.19)
 Model Every tick (the most precise method based on all available least timeframes)
 Parameters MMTType=0; Lots=0.1; RiskPercent=1; FadeEntry=false; EntryGap=1; ProfitTarget=50;
 StopLoss=10; useLog=true;

Bars in test 1006 Ticks modelled 106750 Modelling quality 90.00%
 Mismatched charts errors 0

Initial deposit 250.00
 Total net profit -5.00 Gross profit 0.00 Gross loss -5.00
 Profit factor 0.00 Expected payoff -1.00
 Absolute drawdown 5.00 Maximal drawdown 5.25 (2.10%) Relative drawdown 2.10% (5.25)
 Total trades 5 Short positions (won %) 4 (0.00%) Long positions (won %) 1 (0.00%)
 Profit trades (% of total) 0 (0.00%) Loss trades (% of total) 5 (100.00%)
 Largest profit trade 0.00 loss trade -1.00
 Average profit trade 0.00 loss trade -1.00
 Maximum consecutive wins (profit in money) 0 (0.00) consecutive losses (loss in money) 5 (-5.00)
 Maximal consecutive profit (count of wins) 0.00 (0) consecutive loss (count of losses) -5.00 (5)
 Average consecutive wins 0 consecutive losses 5



Ray Robot II™ Users Manual

#	Time	Type	Order	Size	Price	S / L	T / P	Profit	Balance
1	2011.11.13 23:02	buy stop	1	0.10	1.60952	1.60852	1.61452		
2	2011.11.13 23:02	sell stop	2	0.10	1.58940	1.59040	1.58440		
3	2011.11.14 16:47	sell	2	0.10	1.58940	1.59040	1.58440		
4	2011.11.14 16:47	delete	1	0.10	1.60952	1.60852	1.61452		
5	2011.11.14 16:54	s/l	2	0.10	1.59040	1.59040	1.58440	-1.00	249.00
6	2011.11.15 00:00	buy stop	3	0.10	1.60945	1.60845	1.61445		
7	2011.11.15 00:00	sell stop	4	0.10	1.58790	1.58890	1.58290		
8	2011.11.15 05:36	sell	4	0.10	1.58790	1.58890	1.58290		
9	2011.11.15 05:36	delete	3	0.10	1.60945	1.60845	1.61445		
10	2011.11.15 06:33	s/l	4	0.10	1.58890	1.58890	1.58290	-1.00	248.00
11	2011.11.16 00:00	buy stop	5	0.10	1.59340	1.59240	1.59840		
12	2011.11.16 00:00	sell stop	6	0.10	1.57979	1.58079	1.57479		
13	2011.11.16 01:16	sell	6	0.10	1.57979	1.58079	1.57479		
14	2011.11.16 01:16	delete	5	0.10	1.59340	1.59240	1.59840		
15	2011.11.16 01:26	s/l	6	0.10	1.58079	1.58079	1.57479	-1.00	247.00
16	2011.11.17 00:00	buy stop	7	0.10	1.58241	1.58141	1.58741		
17	2011.11.17 00:00	sell stop	8	0.10	1.57178	1.57278	1.56678		
18	2011.11.17 00:14	sell	8	0.10	1.57178	1.57278	1.56678		
19	2011.11.17 00:14	delete	7	0.10	1.58241	1.58141	1.58741		
20	2011.11.17 03:36	s/l	8	0.10	1.57278	1.57278	1.56678	-1.00	246.00
21	2011.11.18 00:00	buy stop	9	0.10	1.58148	1.58048	1.58648		
22	2011.11.18 00:00	sell stop	10	0.10	1.56897	1.56997	1.56397		
23	2011.11.18 08:38	buy	9	0.10	1.58148	1.58048	1.58648		
24	2011.11.18 08:38	delete	10	0.10	1.56897	1.56997	1.56397		
25	2011.11.18 08:59	s/l	9	0.10	1.58048	1.58048	1.58648	-1.00	245.00

Strategy Tester Report

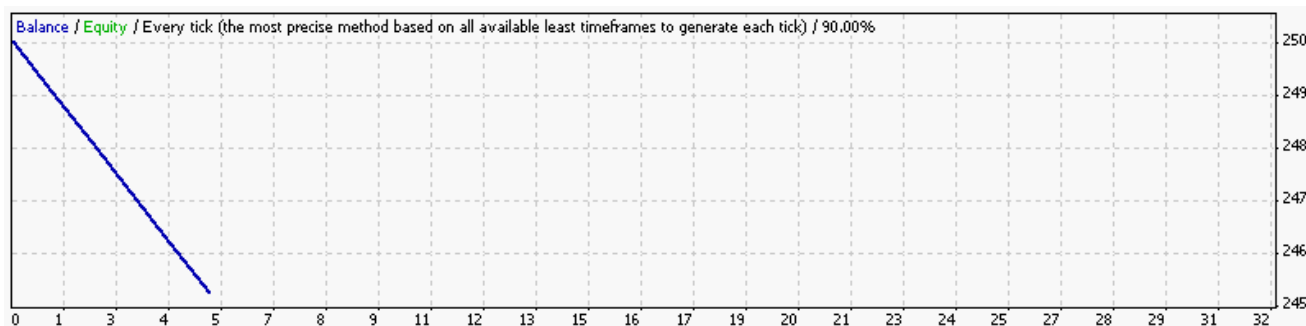
RayRobot2

GKFX Demo (Build 409)

Symbol GBPUSSDB (Great Britain Pound vs US Dollar (Bet per 0.0001))
 Period Daily (D1) 2011.11.13 00:00 - 2011.11.18 00:00 (2011.11.13 - 2011.11.19)
 Model Every tick (the most precise method based on all available least timeframes)
 Parameters MMTYPE=0; Lots=0.1; RiskPercent=1; FadeEntry=false; EntryGap=1; ProfitTarget=50;
 StopLoss=10; useLog=true;

Bars in test 1006 Ticks modelled 106781 Modelling quality 90.00%
 Mismatched charts errors 0

Initial deposit 250.00
 Total net profit -5.00 Gross profit 0.00 Gross loss -5.00
 Profit factor 0.00 Expected payoff -1.00
 Absolute drawdown 5.00 Maximal drawdown 5.25 (2.10%) Relative drawdown 2.10% (5.25)
 Total trades 5 Short positions (won %) 4 (0.00%) Long positions (won %) 1 (0.00%)
 Profit trades (% of total) 0 (0.00%) Loss trades (% of total) 5 (100.00%)
 Largest profit trade 0.00 loss trade -1.00
 Average profit trade 0.00 loss trade -1.00
 Maximum consecutive wins (profit in money) 0 (0.00) consecutive losses (loss in money) 5 (-5.00)
 Maximal consecutive profit (count of wins) 0.00 (0) consecutive loss (count of losses) -5.00 (5)
 Average consecutive wins 0 consecutive losses 5



Ray Robot II™ Users Manual

#	Time	Type	Order	Size	Price	S / L	T / P	Profit	Balance
1	2011.11.13 23:00	buy stop	1	0.10	1.60952	1.60852	1.61452		
2	2011.11.13 23:00	sell stop	2	0.10	1.58940	1.59040	1.58440		
3	2011.11.14 16:47	sell	2	0.10	1.58940	1.59040	1.58440		
4	2011.11.14 16:47	delete	1	0.10	1.60952	1.60852	1.61452		
5	2011.11.14 16:54	s/l	2	0.10	1.59040	1.59040	1.58440	-1.00	249.00
6	2011.11.15 00:00	buy stop	3	0.10	1.60945	1.60845	1.61445		
7	2011.11.15 00:00	sell stop	4	0.10	1.58790	1.58890	1.58290		
8	2011.11.15 05:36	sell	4	0.10	1.58790	1.58890	1.58290		
9	2011.11.15 05:36	delete	3	0.10	1.60945	1.60845	1.61445		
10	2011.11.15 06:33	s/l	4	0.10	1.58890	1.58890	1.58290	-1.00	248.00
11	2011.11.16 00:00	buy stop	5	0.10	1.59340	1.59240	1.59840		
12	2011.11.16 00:00	sell stop	6	0.10	1.57979	1.58079	1.57479		
13	2011.11.16 01:16	sell	6	0.10	1.57979	1.58079	1.57479		
14	2011.11.16 01:16	delete	5	0.10	1.59340	1.59240	1.59840		
15	2011.11.16 01:26	s/l	6	0.10	1.58079	1.58079	1.57479	-1.00	247.00
16	2011.11.17 00:00	buy stop	7	0.10	1.58241	1.58141	1.58741		
17	2011.11.17 00:00	sell stop	8	0.10	1.57178	1.57278	1.56678		
18	2011.11.17 00:14	sell	8	0.10	1.57178	1.57278	1.56678		
19	2011.11.17 00:14	delete	7	0.10	1.58241	1.58141	1.58741		
20	2011.11.17 03:36	s/l	8	0.10	1.57278	1.57278	1.56678	-1.00	246.00
21	2011.11.18 00:00	buy stop	9	0.10	1.58148	1.58048	1.58648		
22	2011.11.18 00:00	sell stop	10	0.10	1.56897	1.56997	1.56397		
23	2011.11.18 08:38	buy	9	0.10	1.58148	1.58048	1.58648		
24	2011.11.18 08:38	delete	10	0.10	1.56897	1.56997	1.56397		
25	2011.11.18 08:59	s/l	9	0.10	1.58048	1.58048	1.58648	-1.00	245.00

Delayed Quotes

GKFX Live Account

[illegible]

[illegible]

14:30:27 GuruLoggerCSV GBPUSDSB,M1: Alert: GBPUSDSB - Time difference 10 seconds at 2011/11/18 14:30:29.226. Server time = 15:30:19
14:30:29 GuruLoggerCSV GBPUSDSB,M1: Alert: GBPUSDSB - Time difference 10 seconds at 2011/11/18 14:30:30.023. Server time = 15:30:20
14:30:30 GuruLoggerCSV GBPUSDSB,M1: Alert: GBPUSDSB - Time difference 11 seconds at 2011/11/18 14:30:32.648. Server time = 15:30:21
14:30:32 GuruLoggerCSV GBPUSDSB,M1: Alert: GBPUSDSB - Time difference 10 seconds at 2011/11/18 14:30:33.976. Server time = 15:30:23
14:30:33 GuruLoggerCSV GBPUSDSB,M1: Alert: GBPUSDSB - Time difference 10 seconds at 2011/11/18 14:30:34.008. Server time = 15:30:24
14:30:33 GuruLoggerCSV GBPUSDSB,M1: Alert: GBPUSDSB - Time difference 10 seconds at 2011/11/18 14:30:34.023. Server time = 15:30:24
14:30:34 GuruLoggerCSV GBPUSDSB,M1: Alert: GBPUSDSB - Time difference 5 seconds at 2011/11/18 14:30:35.851. Server time = 15:30:30
14:30:35 GuruLoggerCSV GBPUSDSB,M1: Alert: GBPUSDSB - Time difference 7 seconds at 2011/11/18 14:30:40.008. Server time = 15:30:33
14:30:35 GuruLoggerCSV GBPUSDSB,M1: Alert: GBPUSDSB - Time difference 7 seconds at 2011/11/18 14:30:40.023. Server time = 15:30:33
14:30:35 GuruLoggerCSV GBPUSDSB,M1: Alert: GBPUSDSB - Time difference 5 seconds at 2011/11/18 14:30:40.117. Server time = 15:30:35
14:30:40 GuruLoggerCSV GBPUSDSB,M1: Alert: GBPUSDSB - Time difference 6 seconds at 2011/11/18 14:30:44.930. Server time = 15:30:38
14:30:44 GuruLoggerCSV GBPUSDSB,M1: Alert: GBPUSDSB - Time difference 5 seconds at 2011/11/18 14:30:45.008. Server time = 15:30:40
14:30:44 GuruLoggerCSV GBPUSDSB,M1: Alert: GBPUSDSB - Time difference 4 seconds at 2011/11/18 14:30:45.023. Server time = 15:30:41
14:30:45 GuruLoggerCSV GBPUSDSB,M1: Alert: GBPUSDSB - Time difference 4 seconds at 2011/11/18 14:30:52.226. Server time = 15:30:48
15:45:02 GuruLoggerCSV GBPUSDSB,M1: Alert: GBPUSDSB - Time difference 4 seconds at 2011/11/18 15:45:02.283. Server time = 16:44:58
16:35:12 GuruLoggerCSV GBPUSDSB,M1: Alert: GBPUSDSB - Time difference 4 seconds at 2011/11/18 16:35:12.596. Server time = 17:35:08
16:35:12 GuruLoggerCSV GBPUSDSB,M1: Alert: GBPUSDSB - Time difference 4 seconds at 2011/11/18 16:35:12.611. Server time = 17:35:08
16:35:12 GuruLoggerCSV GBPUSDSB,M1: Alert: GBPUSDSB - Time difference 4 seconds at 2011/11/18 16:35:13.924. Server time = 17:35:09
17:00:14 GuruLoggerCSV GBPUSDSB,M1: Alert: GBPUSDSB - Time difference 4 seconds at 2011/11/18 17:00:14.142. Server time = 18:00:10
17:16:02 GuruLoggerCSV GBPUSDSB,M1: Alert: GBPUSDSB - Time difference 17 seconds at 2011/11/18 17:16:02.205. Server time = 18:15:45
17:16:02 GuruLoggerCSV GBPUSDSB,M1: Alert: GBPUSDSB - Time difference 17 seconds at 2011/11/18 17:16:02.236. Server time = 18:15:45
17:16:02 GuruLoggerCSV GBPUSDSB,M1: Alert: GBPUSDSB - Time difference 14 seconds at 2011/11/18 17:16:02.299. Server time = 18:15:48

Alpari UK Live Account

[illegible]

Ray Robot II™ Users Manual

[illegible]

Ray Robot II™ Users Manual

[illegible]

Ray Robot II™ Users Manual

[illegible]

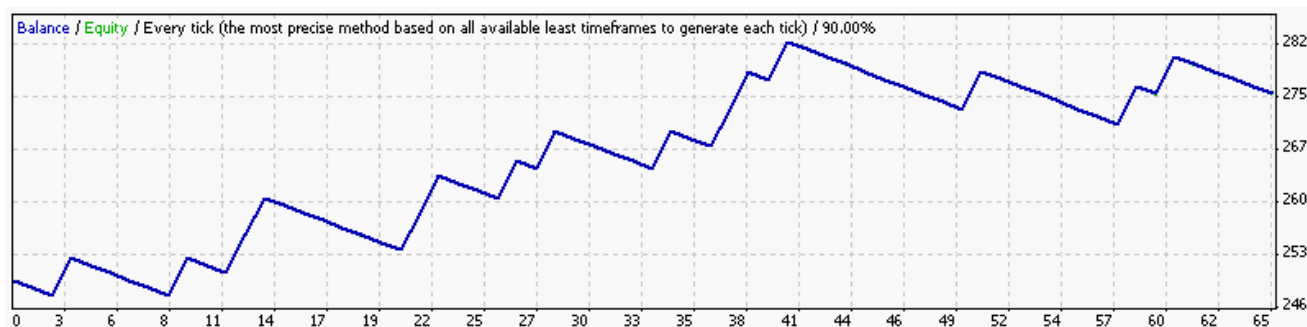
Three Month Backtest Results**Strategy Tester Report****RayRobot2****Smart Live Spread Trading Live (Build 409)**

Symbol GBPU\$DSB (Great Britain Pound vs US Dollar (Bet per 0.0001))
 Period Daily (D1) 2011.07.31 00:00 - 2011.11.18 00:00 (2011.07.31 - 2011.11.19)
 Model Every tick (the most precise method based on all available least timeframes)
 Parameters MMTType=0; Lots=0.1; RiskPercent=1; FadeEntry=false; EntryGap=1; ProfitTarget=50;
 StopLoss=10; useLog=true;

Bars in test 1025 Ticks modelled 1571785 Modelling quality 90.00%
 Mismatched charts errors 7

Initial deposit 250.00
 Total net profit 25.01 Gross profit 75.00 Gross loss -49.99
 Profit factor 1.50 Expected payoff 0.38
 Absolute drawdown 2.20 Maximal drawdown 15.13 (5.29%) Relative drawdown 5.29% (15.13)

Total trades 65 Short positions (won %) 35 (20.00%) Long positions (won %) 30 (26.67%)
 Profit trades (% of total) 15 (23.08%) Loss trades (% of total) 50 (76.92%)
 Largest profit trade 5.00 loss trade -1.02
 Average profit trade 5.00 loss trade -1.00
 Maximum consecutive wins (profit in money) 2 (10.00) consecutive losses (loss in money) 9 (-8.98)
 Maximal consecutive profit (count of wins) 10.00 (2) consecutive loss (count of losses) -8.98 (9)
 Average consecutive wins 1 consecutive losses 4



Ray Robot II™ Users Manual

#	Time	Type	Order	Size	Price	S / L	T / P	Profit	Balance
1	2011.07.31 23:03	buy stop	1	0.10	1.64726	1.64626	1.65226		
2	2011.07.31 23:03	sell stop	2	0.10	1.62594	1.62694	1.62094		
3	2011.08.01 02:35	buy	1	0.10	1.64726	1.64626	1.65226		
4	2011.08.01 02:35	delete	2	0.10	1.62594	1.62694	1.62094		
5	2011.08.01 02:41	s/l	1	0.10	1.64626	1.64626	1.65226	-1.00	249.00
6	2011.08.02 00:00	buy stop	3	0.10	1.64774	1.64674	1.65274		
7	2011.08.02 00:00	sell stop	4	0.10	1.62358	1.62458	1.61858		
8	2011.08.02 14:24	sell	4	0.10	1.62358	1.62458	1.61858		
9	2011.08.02 14:24	delete	3	0.10	1.64774	1.64674	1.65274		
10	2011.08.02 14:31	s/l	4	0.10	1.62458	1.62458	1.61858	-1.00	248.00
11	2011.08.03 00:00	buy stop	5	0.10	1.63308	1.63208	1.63808		
12	2011.08.03 00:00	sell stop	6	0.10	1.62229	1.62329	1.61729		
13	2011.08.03 10:28	buy	5	0.10	1.63308	1.63208	1.63808		
14	2011.08.03 10:28	delete	6	0.10	1.62229	1.62329	1.61729		
15	2011.08.03 11:00	t/p	5	0.10	1.63808	1.63208	1.63808	5.00	253.00
16	2011.08.04 00:00	buy stop	7	0.10	1.64422	1.64322	1.64922		
17	2011.08.04 00:00	sell stop	8	0.10	1.62495	1.62595	1.61995		
18	2011.08.04 22:28	sell	8	0.10	1.62495	1.62595	1.61995		
19	2011.08.04 22:28	delete	7	0.10	1.64422	1.64322	1.64922		
20	2011.08.04 22:34	s/l	8	0.10	1.62595	1.62595	1.61995	-1.00	252.00
21	2011.08.05 00:00	buy stop	9	0.10	1.64412	1.64312	1.64912		
22	2011.08.05 00:00	sell stop	10	0.10	1.62446	1.62546	1.61946		
23	2011.08.05 00:12	sell	10	0.10	1.62446	1.62546	1.61946		
24	2011.08.05 00:12	delete	9	0.10	1.64412	1.64312	1.64912		
25	2011.08.05 02:22	s/l	10	0.10	1.62546	1.62546	1.61946	-1.00	251.00
26	2011.08.07 23:00	sell stop	11	0.10	1.62273	1.62373	1.61773		
27	2011.08.09 00:00	buy stop	12	0.10	1.64799	1.64699	1.65299		
28	2011.08.09 00:00	modify	11	0.10	1.62954	1.63054	1.62454		
29	2011.08.09 02:13	sell	11	0.10	1.62954	1.63054	1.62454		
30	2011.08.09 02:13	delete	12	0.10	1.64799	1.64699	1.65299		
31	2011.08.09 04:06	s/l	11	0.10	1.63054	1.63054	1.62454	-1.00	250.00
32	2011.08.10 00:00	buy stop	13	0.10	1.64131	1.64031	1.64631		
33	2011.08.10 00:00	sell stop	14	0.10	1.61739	1.61839	1.61239		
34	2011.08.10 15:39	sell	14	0.10	1.61739	1.61839	1.61239		

Ray Robot II™ Users Manual

35	2011.08.10 15:39	delete	13	0.10	1.64131	1.64031	1.64631		
36	2011.08.10 15:42	s/l	14	0.10	1.61839	1.61839	1.61239	-1.00	249.00
37	2011.08.11 00:00	buy stop	15	0.10	1.63332	1.63232	1.63832		
38	2011.08.11 00:00	sell stop	16	0.10	1.61221	1.61321	1.60721		
39	2011.08.11 00:02	sell	16	0.10	1.61221	1.61321	1.60721		
40	2011.08.11 00:02	delete	15	0.10	1.63332	1.63232	1.63832		
41	2011.08.11 00:23	s/l	16	0.10	1.61321	1.61321	1.60721	-1.00	248.00
42	2011.08.12 00:00	buy stop	17	0.10	1.62448	1.62348	1.62948		
43	2011.08.12 00:00	sell stop	18	0.10	1.61097	1.61197	1.60597		
44	2011.08.12 10:40	buy	17	0.10	1.62448	1.62348	1.62948		
45	2011.08.12 10:40	delete	18	0.10	1.61097	1.61197	1.60597		
46	2011.08.12 11:24	t/p	17	0.10	1.62948	1.62348	1.62948	5.00	253.00
47	2011.08.14 23:00	buy stop	19	0.10	1.63144	1.63044	1.63644		
48	2011.08.14 23:00	sell stop	20	0.10	1.61650	1.61750	1.61150		
49	2011.08.15 10:59	buy	19	0.10	1.63144	1.63044	1.63644		
50	2011.08.15 10:59	delete	20	0.10	1.61650	1.61750	1.61150		
51	2011.08.15 11:41	s/l	19	0.10	1.63044	1.63044	1.63644	-1.00	252.00
52	2011.08.16 00:00	buy stop	21	0.10	1.64115	1.64015	1.64615		
53	2011.08.16 00:00	sell stop	22	0.10	1.62546	1.62646	1.62046		
54	2011.08.16 16:29	buy	21	0.10	1.64115	1.64015	1.64615		
55	2011.08.16 16:29	delete	22	0.10	1.62546	1.62646	1.62046		
56	2011.08.16 18:30	s/l	21	0.10	1.64015	1.64015	1.64615	-1.00	251.00
57	2011.08.17 00:00	buy stop	23	0.10	1.64783	1.64683	1.65283		
58	2011.08.17 00:00	sell stop	24	0.10	1.63212	1.63312	1.62712		
59	2011.08.17 13:51	buy	23	0.10	1.64783	1.64683	1.65283		
60	2011.08.17 13:51	delete	24	0.10	1.63212	1.63312	1.62712		
61	2011.08.17 14:00	t/p	23	0.10	1.65283	1.64683	1.65283	5.00	256.00
62	2011.08.18 00:00	buy stop	25	0.10	1.65927	1.65827	1.66427		
63	2011.08.18 00:00	sell stop	26	0.10	1.63509	1.63609	1.63009		
64	2011.08.19 00:00	modify	25	0.10	1.65575	1.65475	1.66075		
65	2011.08.19 00:00	modify	26	0.10	1.64189	1.64289	1.63689		
66	2011.08.19 14:18	buy	25	0.10	1.65575	1.65475	1.66075		
67	2011.08.19 14:18	delete	26	0.10	1.64189	1.64289	1.63689		
68	2011.08.19 16:15	t/p	25	0.10	1.66075	1.65475	1.66075	5.00	261.00
69	2011.08.21 23:00	buy stop	27	0.10	1.66201	1.66101	1.66701		

Ray Robot II™ Users Manual

70	2011.08.21 23:00	sell stop	28	0.10	1.64428	1.64528	1.63928		
71	2011.08.22 16:59	sell	28	0.10	1.64428	1.64528	1.63928		
72	2011.08.22 16:59	delete	27	0.10	1.66201	1.66101	1.66701		
73	2011.08.22 17:15	s/l	28	0.10	1.64528	1.64528	1.63928	-1.00	260.00
74	2011.08.23 00:00	buy stop	29	0.10	1.65233	1.65133	1.65733		
75	2011.08.23 00:00	sell stop	30	0.10	1.64341	1.64441	1.63841		
76	2011.08.23 09:17	buy	29	0.10	1.65233	1.65133	1.65733		
77	2011.08.23 09:17	delete	30	0.10	1.64341	1.64441	1.63841		
78	2011.08.23 09:21	s/l	29	0.10	1.65133	1.65133	1.65733	-1.00	259.00
79	2011.08.24 00:00	buy stop	31	0.10	1.65747	1.65647	1.66247		
80	2011.08.24 00:00	sell stop	32	0.10	1.64528	1.64628	1.64028		
81	2011.08.24 14:06	sell	32	0.10	1.64528	1.64628	1.64028		
82	2011.08.24 14:06	delete	31	0.10	1.65747	1.65647	1.66247		
83	2011.08.24 14:15	s/l	32	0.10	1.64628	1.64628	1.64028	-1.00	258.00
84	2011.08.25 00:00	buy stop	33	0.10	1.65360	1.65260	1.65860		
85	2011.08.25 00:00	sell stop	34	0.10	1.63567	1.63667	1.63067		
86	2011.08.25 00:02	sell	34	0.10	1.63567	1.63667	1.63067		
87	2011.08.25 00:02	delete	33	0.10	1.65360	1.65260	1.65860		
88	2011.08.25 00:23	s/l	34	0.10	1.63667	1.63667	1.63067	-1.00	257.00
89	2011.08.26 00:00	buy stop	35	0.10	1.63994	1.63894	1.64494		
90	2011.08.26 00:00	sell stop	36	0.10	1.62605	1.62705	1.62105		
91	2011.08.26 13:54	sell	36	0.10	1.62605	1.62705	1.62105		
92	2011.08.26 13:54	delete	35	0.10	1.63994	1.63894	1.64494		
93	2011.08.26 14:26	s/l	36	0.10	1.62705	1.62705	1.62105	-1.00	256.00
94	2011.08.28 23:00	buy stop	37	0.10	1.63810	1.63710	1.64310		
95	2011.08.28 23:00	sell stop	38	0.10	1.62064	1.62164	1.61564		
96	2011.08.29 01:09	buy	37	0.10	1.63810	1.63710	1.64310		
97	2011.08.29 01:09	delete	38	0.10	1.62064	1.62164	1.61564		
98	2011.08.30 07:26	s/l	37	0.10	1.63710	1.63710	1.64310	-0.98	255.01
99	2011.08.31 00:00	buy stop	39	0.10	1.64218	1.64118	1.64718		
100	2011.08.31 00:00	sell stop	40	0.10	1.62537	1.62637	1.62037		
101	2011.08.31 14:53	sell	40	0.10	1.62537	1.62637	1.62037		
102	2011.08.31 14:53	delete	39	0.10	1.64218	1.64118	1.64718		
103	2011.08.31 21:21	s/l	40	0.10	1.62637	1.62637	1.62037	-1.00	254.01
104	2011.09.01 00:00	buy stop	41	0.10	1.63363	1.63263	1.63863		

Ray Robot II™ Users Manual

105	2011.09.01 00:00	sell stop	42	0.10	1.62297	1.62397	1.61797		
106	2011.09.01 07:05	sell	42	0.10	1.62297	1.62397	1.61797		
107	2011.09.01 07:05	delete	41	0.10	1.63363	1.63263	1.63863		
108	2011.09.01 11:53	t/p	42	0.10	1.61797	1.62397	1.61797	5.00	259.01
109	2011.09.02 00:00	buy stop	43	0.10	1.62575	1.62475	1.63075		
110	2011.09.02 00:00	sell stop	44	0.10	1.61304	1.61404	1.60804		
111	2011.09.04 00:00	modify	43	0.10	1.62560	1.62460	1.63060		
112	2011.09.05 10:50	sell	44	0.10	1.61304	1.61404	1.60804		
113	2011.09.05 10:50	delete	43	0.10	1.62560	1.62460	1.63060		
114	2011.09.05 15:15	t/p	44	0.10	1.60804	1.61404	1.60804	5.00	264.01
115	2011.09.06 00:00	buy stop	45	0.10	1.61879	1.61779	1.62379		
116	2011.09.06 00:00	sell stop	46	0.10	1.60600	1.60700	1.60100		
117	2011.09.06 05:10	buy	45	0.10	1.61879	1.61779	1.62379		
118	2011.09.06 05:10	delete	46	0.10	1.60600	1.60700	1.60100		
119	2011.09.06 06:29	s/l	45	0.10	1.61779	1.61779	1.62379	-1.00	263.01
120	2011.09.07 00:00	buy stop	47	0.10	1.62079	1.61979	1.62579		
121	2011.09.07 00:00	sell stop	48	0.10	1.59196	1.59296	1.58696		
122	2011.09.07 05:42	sell	48	0.10	1.59196	1.59296	1.58696		
123	2011.09.07 05:42	delete	47	0.10	1.62079	1.61979	1.62579		
124	2011.09.07 06:18	s/l	48	0.10	1.59296	1.59296	1.58696	-1.00	262.01
125	2011.09.08 00:00	buy stop	49	0.10	1.60419	1.60319	1.60919		
126	2011.09.08 00:00	sell stop	50	0.10	1.59174	1.59274	1.58674		
127	2011.09.08 01:18	buy	49	0.10	1.60419	1.60319	1.60919		
128	2011.09.08 01:18	delete	50	0.10	1.59174	1.59274	1.58674		
129	2011.09.08 07:33	s/l	49	0.10	1.60319	1.60319	1.60919	-1.00	261.01
130	2011.09.09 00:00	buy stop	51	0.10	1.60853	1.60753	1.61353		
131	2011.09.09 00:00	sell stop	52	0.10	1.59118	1.59218	1.58618		
132	2011.09.09 11:16	sell	52	0.10	1.59118	1.59218	1.58618		
133	2011.09.09 11:16	delete	51	0.10	1.60853	1.60753	1.61353		
134	2011.09.09 15:20	t/p	52	0.10	1.58618	1.59218	1.58618	5.00	266.01
135	2011.09.11 00:00	buy stop	53	0.10	1.59931	1.59831	1.60431		
136	2011.09.13 00:01	modify	53	0.10	1.58879	1.58779	1.59379		
137	2011.09.13 00:01	sell stop	54	0.10	1.57717	1.57817	1.57217		
138	2011.09.13 10:08	sell	54	0.10	1.57717	1.57817	1.57217		
139	2011.09.13 10:08	delete	53	0.10	1.58879	1.58779	1.59379		

Ray Robot II™ Users Manual

140	2011.09.13 10:24	s/l	54	0.10	1.57817	1.57817	1.57217	-1.00	265.01
141	2011.09.14 00:00	buy stop	55	0.10	1.58719	1.58619	1.59219		
142	2011.09.14 00:00	sell stop	56	0.10	1.57607	1.57707	1.57107		
143	2011.09.14 05:14	sell	56	0.10	1.57607	1.57707	1.57107		
144	2011.09.14 05:14	delete	55	0.10	1.58719	1.58619	1.59219		
145	2011.09.14 09:15	t/p	56	0.10	1.57107	1.57707	1.57107	5.00	270.01
146	2011.09.15 00:00	buy stop	57	0.10	1.58135	1.58035	1.58635		
147	2011.09.15 00:00	sell stop	58	0.10	1.57053	1.57153	1.56553		
148	2011.09.15 11:59	buy	57	0.10	1.58135	1.58035	1.58635		
149	2011.09.15 11:59	delete	58	0.10	1.57053	1.57153	1.56553		
150	2011.09.15 12:22	s/l	57	0.10	1.58035	1.58035	1.58635	-1.00	269.01
151	2011.09.16 00:00	buy stop	59	0.10	1.58706	1.58606	1.59206		
152	2011.09.16 00:00	sell stop	60	0.10	1.57296	1.57396	1.56796		
153	2011.09.18 00:00	modify	59	0.10	1.58436	1.58336	1.58936		
154	2011.09.18 14:34	sell	60	0.10	1.57296	1.57396	1.56796		
155	2011.09.18 14:34	delete	59	0.10	1.58436	1.58336	1.58936		
156	2011.09.19 01:27	s/l	60	0.10	1.57396	1.57396	1.56796	-1.02	267.99
157	2011.09.20 00:00	buy stop	61	0.10	1.57579	1.57479	1.58079		
158	2011.09.20 00:00	sell stop	62	0.10	1.56315	1.56415	1.55815		
159	2011.09.21 00:00	modify	61	0.10	1.57495	1.57395	1.57995		
160	2011.09.21 00:00	modify	62	0.10	1.56544	1.56644	1.56044		
161	2011.09.21 07:42	sell	62	0.10	1.56544	1.56644	1.56044		
162	2011.09.21 07:42	delete	61	0.10	1.57495	1.57395	1.57995		
163	2011.09.21 09:05	s/l	62	0.10	1.56644	1.56644	1.56044	-1.00	266.99
164	2011.09.22 00:00	buy stop	63	0.10	1.57443	1.57343	1.57943		
165	2011.09.22 00:00	sell stop	64	0.10	1.54851	1.54951	1.54351		
166	2011.09.22 03:13	sell	64	0.10	1.54851	1.54951	1.54351		
167	2011.09.22 03:13	delete	63	0.10	1.57443	1.57343	1.57943		
168	2011.09.22 04:31	s/l	64	0.10	1.54951	1.54951	1.54351	-1.00	265.99
169	2011.09.23 00:00	buy stop	65	0.10	1.55188	1.55088	1.55688		
170	2011.09.23 00:00	sell stop	66	0.10	1.53263	1.53363	1.52763		
171	2011.09.25 00:00	modify	65	0.10	1.54935	1.54835	1.55435		
172	2011.09.25 00:00	modify	66	0.10	1.53382	1.53482	1.52882		
173	2011.09.26 07:21	buy	65	0.10	1.54935	1.54835	1.55435		
174	2011.09.26 07:21	delete	66	0.10	1.53382	1.53482	1.52882		

Ray Robot II™ Users Manual

175	2011.09.26 09:17	s/l	65	0.10	1.54835	1.54835	1.55435	-1.00	264.99
176	2011.09.27 00:00	buy stop	67	0.10	1.55732	1.55632	1.56232		
177	2011.09.27 00:00	sell stop	68	0.10	1.54310	1.54410	1.53810		
178	2011.09.27 07:00	buy	67	0.10	1.55732	1.55632	1.56232		
179	2011.09.27 07:00	delete	68	0.10	1.54310	1.54410	1.53810		
180	2011.09.27 10:54	t/p	67	0.10	1.56232	1.55632	1.56232	5.00	269.99
181	2011.09.28 00:00	buy stop	69	0.10	1.57073	1.56973	1.57573		
182	2011.09.28 00:00	sell stop	70	0.10	1.55246	1.55346	1.54746		
183	2011.09.29 00:00	modify	69	0.10	1.56791	1.56691	1.57291		
184	2011.09.29 00:00	modify	70	0.10	1.55621	1.55721	1.55121		
185	2011.09.29 01:11	sell	70	0.10	1.55621	1.55721	1.55121		
186	2011.09.29 01:11	delete	69	0.10	1.56791	1.56691	1.57291		
187	2011.09.29 03:25	s/l	70	0.10	1.55721	1.55721	1.55121	-1.00	268.99
188	2011.09.30 00:00	buy stop	71	0.10	1.57175	1.57075	1.57675		
189	2011.09.30 00:00	sell stop	72	0.10	1.55414	1.55514	1.54914		
190	2011.09.30 15:26	sell	72	0.10	1.55414	1.55514	1.54914		
191	2011.09.30 15:26	delete	71	0.10	1.57175	1.57075	1.57675		
192	2011.09.30 17:13	s/l	72	0.10	1.55514	1.55514	1.54914	-1.00	267.99
193	2011.10.02 00:00	buy stop	73	0.10	1.56675	1.56575	1.57175		
194	2011.10.02 00:00	sell stop	74	0.10	1.55311	1.55411	1.54811		
195	2011.10.03 07:36	sell	74	0.10	1.55311	1.55411	1.54811		
196	2011.10.03 07:36	delete	73	0.10	1.56675	1.56575	1.57175		
197	2011.10.03 14:22	t/p	74	0.10	1.54811	1.55411	1.54811	5.00	272.99
198	2011.10.04 00:00	buy stop	75	0.10	1.55861	1.55761	1.56361		
199	2011.10.04 00:00	sell stop	76	0.10	1.54194	1.54294	1.53694		
200	2011.10.04 00:26	sell	76	0.10	1.54194	1.54294	1.53694		
201	2011.10.04 00:26	delete	75	0.10	1.55861	1.55761	1.56361		
202	2011.10.04 01:39	t/p	76	0.10	1.53694	1.54294	1.53694	5.00	277.99
203	2011.10.05 00:00	buy stop	77	0.10	1.54973	1.54873	1.55473		
204	2011.10.05 00:00	sell stop	78	0.10	1.53390	1.53490	1.52890		
205	2011.10.06 00:00	modify	77	0.10	1.54949	1.54849	1.55449		
206	2011.10.06 00:00	modify	78	0.10	1.53935	1.54035	1.53435		
207	2011.10.06 05:12	buy	77	0.10	1.54949	1.54849	1.55449		
208	2011.10.06 05:12	delete	78	0.10	1.53935	1.54035	1.53435		
209	2011.10.06 06:17	s/l	77	0.10	1.54849	1.54849	1.55449	-1.00	276.99

Ray Robot II™ Users Manual

210	2011.10.07 00:00	buy stop	79	0.10	1.55039	1.54939	1.55539		
211	2011.10.07 00:00	sell stop	80	0.10	1.52696	1.52796	1.52196		
212	2011.10.07 07:30	buy	79	0.10	1.55039	1.54939	1.55539		
213	2011.10.07 07:30	delete	80	0.10	1.52696	1.52796	1.52196		
214	2011.10.07 11:11	t/p	79	0.10	1.55539	1.54939	1.55539	5.00	281.99
215	2011.10.09 00:00	buy stop	81	0.10	1.56482	1.56382	1.56982		
216	2011.10.09 00:00	sell stop	82	0.10	1.54217	1.54317	1.53717		
217	2011.10.10 14:31	buy	81	0.10	1.56482	1.56382	1.56982		
218	2011.10.10 14:31	delete	82	0.10	1.54217	1.54317	1.53717		
219	2011.10.10 21:30	s/l	81	0.10	1.56382	1.56382	1.56982	-1.00	280.99
220	2011.10.11 20:31	buy stop	83	0.10	1.56913	1.56813	1.57413		
221	2011.10.11 20:31	sell stop	84	0.10	1.55260	1.55360	1.54760		
222	2011.10.12 00:00	modify	83	0.10	1.56656	1.56556	1.57156		
223	2011.10.12 00:00	modify	84	0.10	1.55734	1.55834	1.55234		
224	2011.10.12 02:00	sell	84	0.10	1.55734	1.55834	1.55234		
225	2011.10.12 02:00	delete	83	0.10	1.56656	1.56556	1.57156		
226	2011.10.12 07:18	s/l	84	0.10	1.55834	1.55834	1.55234	-1.00	279.99
227	2011.10.13 00:00	buy stop	85	0.10	1.58000	1.57900	1.58500		
228	2011.10.13 00:00	sell stop	86	0.10	1.55413	1.55513	1.54913		
229	2011.10.14 00:00	modify	85	0.10	1.57862	1.57762	1.58362		
230	2011.10.14 00:00	modify	86	0.10	1.56645	1.56745	1.56145		
231	2011.10.14 08:33	buy	85	0.10	1.57862	1.57762	1.58362		
232	2011.10.14 08:33	delete	86	0.10	1.56645	1.56745	1.56145		
233	2011.10.14 08:46	s/l	85	0.10	1.57762	1.57762	1.58362	-1.00	278.99
234	2011.10.16 23:00	buy stop	87	0.10	1.58544	1.58444	1.59044		
235	2011.10.16 23:00	sell stop	88	0.10	1.57201	1.57301	1.56701		
236	2011.10.18 00:00	modify	87	0.10	1.58502	1.58402	1.59002		
237	2011.10.18 00:00	modify	88	0.10	1.57294	1.57394	1.56794		
238	2011.10.18 10:35	sell	88	0.10	1.57294	1.57394	1.56794		
239	2011.10.18 10:35	delete	87	0.10	1.58502	1.58402	1.59002		
240	2011.10.18 12:38	s/l	88	0.10	1.57394	1.57394	1.56794	-1.00	277.99
241	2011.10.19 00:00	buy stop	89	0.10	1.58235	1.58135	1.58735		
242	2011.10.19 00:00	sell stop	90	0.10	1.56301	1.56401	1.55801		
243	2011.10.19 14:36	buy	89	0.10	1.58235	1.58135	1.58735		
244	2011.10.19 14:36	delete	90	0.10	1.56301	1.56401	1.55801		

Ray Robot II™ Users Manual

245	2011.10.19 15:42	s/l	89	0.10	1.58135	1.58135	1.58735	-1.00	276.99
246	2011.10.20 00:00	buy stop	91	0.10	1.58496	1.58396	1.58996		
247	2011.10.20 00:00	sell stop	92	0.10	1.56974	1.57074	1.56474		
248	2011.10.20 08:12	sell	92	0.10	1.56974	1.57074	1.56474		
249	2011.10.20 08:12	delete	91	0.10	1.58496	1.58396	1.58996		
250	2011.10.20 08:17	s/l	92	0.10	1.57074	1.57074	1.56474	-1.00	275.99
251	2011.10.21 00:00	buy stop	93	0.10	1.58049	1.57949	1.58549		
252	2011.10.21 00:00	sell stop	94	0.10	1.56798	1.56898	1.56298		
253	2011.10.21 02:04	buy	93	0.10	1.58049	1.57949	1.58549		
254	2011.10.21 02:04	delete	94	0.10	1.56798	1.56898	1.56298		
255	2011.10.21 02:23	s/l	93	0.10	1.57949	1.57949	1.58549	-1.00	274.99
256	2011.10.23 00:00	buy stop	95	0.10	1.59755	1.59655	1.60255		
257	2011.10.23 00:00	sell stop	96	0.10	1.57522	1.57622	1.57022		
258	2011.10.24 11:39	buy	95	0.10	1.59755	1.59655	1.60255		
259	2011.10.24 11:39	delete	96	0.10	1.57522	1.57622	1.57022		
260	2011.10.25 01:29	s/l	95	0.10	1.59655	1.59655	1.60255	-0.98	274.01
261	2011.10.26 00:00	buy stop	97	0.10	1.60413	1.60313	1.60913		
262	2011.10.26 00:00	sell stop	98	0.10	1.59551	1.59651	1.59051		
263	2011.10.26 05:31	buy	97	0.10	1.60413	1.60313	1.60913		
264	2011.10.26 05:31	delete	98	0.10	1.59551	1.59651	1.59051		
265	2011.10.26 06:17	s/l	97	0.10	1.60313	1.60313	1.60913	-1.00	273.01
266	2011.10.27 00:00	buy stop	99	0.10	1.60440	1.60340	1.60940		
267	2011.10.27 00:00	sell stop	100	0.10	1.58893	1.58993	1.58393		
268	2011.10.27 10:32	buy	99	0.10	1.60440	1.60340	1.60940		
269	2011.10.27 10:32	delete	100	0.10	1.58893	1.58993	1.58393		
270	2011.10.27 14:34	t/p	99	0.10	1.60940	1.60340	1.60940	5.00	278.01
271	2011.10.28 00:00	buy stop	101	0.10	1.61434	1.61334	1.61934		
272	2011.10.28 00:00	sell stop	102	0.10	1.59529	1.59629	1.59029		
273	2011.10.28 15:11	buy	101	0.10	1.61434	1.61334	1.61934		
274	2011.10.28 15:11	delete	102	0.10	1.59529	1.59629	1.59029		
275	2011.10.28 20:51	s/l	101	0.10	1.61334	1.61334	1.61934	-1.00	277.01
276	2011.10.30 00:00	buy stop	103	0.10	1.61543	1.61443	1.62043		
277	2011.10.30 00:00	sell stop	104	0.10	1.60697	1.60797	1.60197		
278	2011.10.31 04:52	buy	103	0.10	1.61543	1.61443	1.62043		
279	2011.10.31 04:52	delete	104	0.10	1.60697	1.60797	1.60197		
280	2011.10.31 06:23	s/l	103	0.10	1.61443	1.61443	1.62043	-1.00	276.01

Ray Robot II™ Users Manual

281	2011.11.01 00:00	buy stop	105	0.10	1.61681	1.61581	1.62181		
282	2011.11.01 00:00	sell stop	106	0.10	1.59637	1.59737	1.59137		
283	2011.11.01 11:33	sell	106	0.10	1.59637	1.59737	1.59137		
284	2011.11.01 11:33	delete	105	0.10	1.61681	1.61581	1.62181		
285	2011.11.01 12:43	s/l	106	0.10	1.59737	1.59737	1.59137	-1.00	275.01
286	2011.11.02 00:00	buy stop	107	0.10	1.60947	1.60847	1.61447		
287	2011.11.02 00:00	sell stop	108	0.10	1.58886	1.58986	1.58386		
288	2011.11.03 00:00	modify	107	0.10	1.60496	1.60396	1.60996		
289	2011.11.03 00:00	modify	108	0.10	1.59147	1.59247	1.58647		
290	2011.11.03 00:38	sell	108	0.10	1.59147	1.59247	1.58647		
291	2011.11.03 00:38	delete	107	0.10	1.60496	1.60396	1.60996		
292	2011.11.03 06:48	s/l	108	0.10	1.59247	1.59247	1.58647	-1.00	274.01
293	2011.11.04 15:24	buy stop	109	0.10	1.60637	1.60537	1.61137		
294	2011.11.04 15:24	sell stop	110	0.10	1.58749	1.58849	1.58249		
295	2011.11.04 18:45	buy	109	0.10	1.60637	1.60537	1.61137		
296	2011.11.04 18:45	delete	110	0.10	1.58749	1.58849	1.58249		
297	2011.11.04 18:45	s/l	109	0.10	1.60537	1.60537	1.61137	-1.00	273.01
298	2011.11.06 23:00	sell stop	111	0.10	1.59442	1.59542	1.58942		
299	2011.11.07 00:00	buy stop	112	0.10	1.60656	1.60556	1.61156		
300	2011.11.07 12:55	buy	112	0.10	1.60656	1.60556	1.61156		
301	2011.11.07 12:55	delete	111	0.10	1.59442	1.59542	1.58942		
302	2011.11.07 12:59	s/l	112	0.10	1.60556	1.60556	1.61156	-1.00	272.01
303	2011.11.08 00:00	buy stop	113	0.10	1.60809	1.60709	1.61309		
304	2011.11.08 00:00	sell stop	114	0.10	1.59780	1.59880	1.59280		
305	2011.11.08 10:03	buy	113	0.10	1.60809	1.60709	1.61309		
306	2011.11.08 10:03	delete	114	0.10	1.59780	1.59880	1.59280		
307	2011.11.08 10:27	s/l	113	0.10	1.60709	1.60709	1.61309	-1.00	271.01
308	2011.11.09 00:00	buy stop	115	0.10	1.61320	1.61220	1.61820		
309	2011.11.09 00:00	sell stop	116	0.10	1.60342	1.60442	1.59842		
310	2011.11.09 10:30	sell	116	0.10	1.60342	1.60442	1.59842		
311	2011.11.09 10:30	delete	115	0.10	1.61320	1.61220	1.61820		
312	2011.11.09 11:40	t/p	116	0.10	1.59842	1.60442	1.59842	5.00	276.01
313	2011.11.10 00:00	buy stop	117	0.10	1.61223	1.61123	1.61723		
314	2011.11.10 00:00	sell stop	118	0.10	1.59013	1.59113	1.58513		
315	2011.11.10 01:24	sell	118	0.10	1.59013	1.59113	1.58513		

Ray Robot II™ Users Manual

316	2011.11.10 01:24	delete	117	0.10	1.61223	1.61123	1.61723		
317	2011.11.10 01:30	s/l	118	0.10	1.59113	1.59113	1.58513	-1.00	275.01
318	2011.11.11 00:00	buy stop	119	0.10	1.59872	1.59772	1.60372		
319	2011.11.11 00:00	sell stop	120	0.10	1.58673	1.58773	1.58173		
320	2011.11.11 15:46	buy	119	0.10	1.59872	1.59772	1.60372		
321	2011.11.11 15:46	delete	120	0.10	1.58673	1.58773	1.58173		
322	2011.11.11 16:25	t/p	119	0.10	1.60372	1.59772	1.60372	5.00	280.01
323	2011.11.13 23:02	buy stop	121	0.10	1.60952	1.60852	1.61452		
324	2011.11.13 23:02	sell stop	122	0.10	1.58940	1.59040	1.58440		
325	2011.11.14 16:47	sell	122	0.10	1.58940	1.59040	1.58440		
326	2011.11.14 16:47	delete	121	0.10	1.60952	1.60852	1.61452		
327	2011.11.14 16:54	s/l	122	0.10	1.59040	1.59040	1.58440	-1.00	279.01
328	2011.11.15 00:00	buy stop	123	0.10	1.60945	1.60845	1.61445		
329	2011.11.15 00:00	sell stop	124	0.10	1.58790	1.58890	1.58290		
330	2011.11.15 05:36	sell	124	0.10	1.58790	1.58890	1.58290		
331	2011.11.15 05:36	delete	123	0.10	1.60945	1.60845	1.61445		
332	2011.11.15 06:33	s/l	124	0.10	1.58890	1.58890	1.58290	-1.00	278.01
333	2011.11.16 00:00	buy stop	125	0.10	1.59340	1.59240	1.59840		
334	2011.11.16 00:00	sell stop	126	0.10	1.57979	1.58079	1.57479		
335	2011.11.16 01:16	sell	126	0.10	1.57979	1.58079	1.57479		
336	2011.11.16 01:16	delete	125	0.10	1.59340	1.59240	1.59840		
337	2011.11.16 01:26	s/l	126	0.10	1.58079	1.58079	1.57479	-1.00	277.01
338	2011.11.17 00:00	buy stop	127	0.10	1.58241	1.58141	1.58741		
339	2011.11.17 00:00	sell stop	128	0.10	1.57178	1.57278	1.56678		
340	2011.11.17 00:14	sell	128	0.10	1.57178	1.57278	1.56678		
341	2011.11.17 00:14	delete	127	0.10	1.58241	1.58141	1.58741		
342	2011.11.17 03:36	s/l	128	0.10	1.57278	1.57278	1.56678	-1.00	276.01
343	2011.11.18 00:00	buy stop	129	0.10	1.58148	1.58048	1.58648		
344	2011.11.18 00:00	sell stop	130	0.10	1.56897	1.56997	1.56397		
345	2011.11.18 08:38	buy	129	0.10	1.58148	1.58048	1.58648		
346	2011.11.18 08:38	delete	130	0.10	1.56897	1.56997	1.56397		
347	2011.11.18 08:59	s/l	129	0.10	1.58048	1.58048	1.58648	-1.00	275.01